



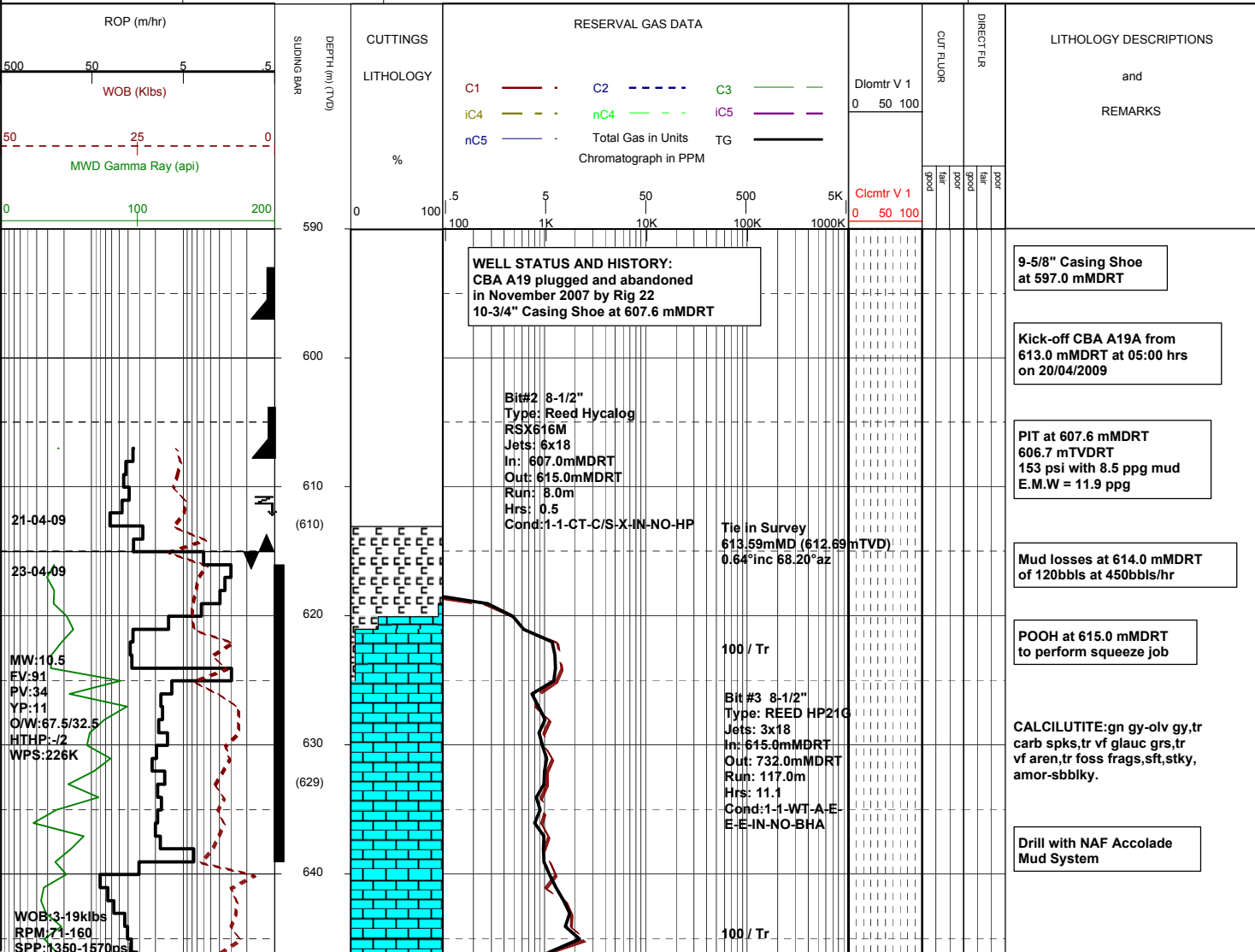
# MASTERLOG

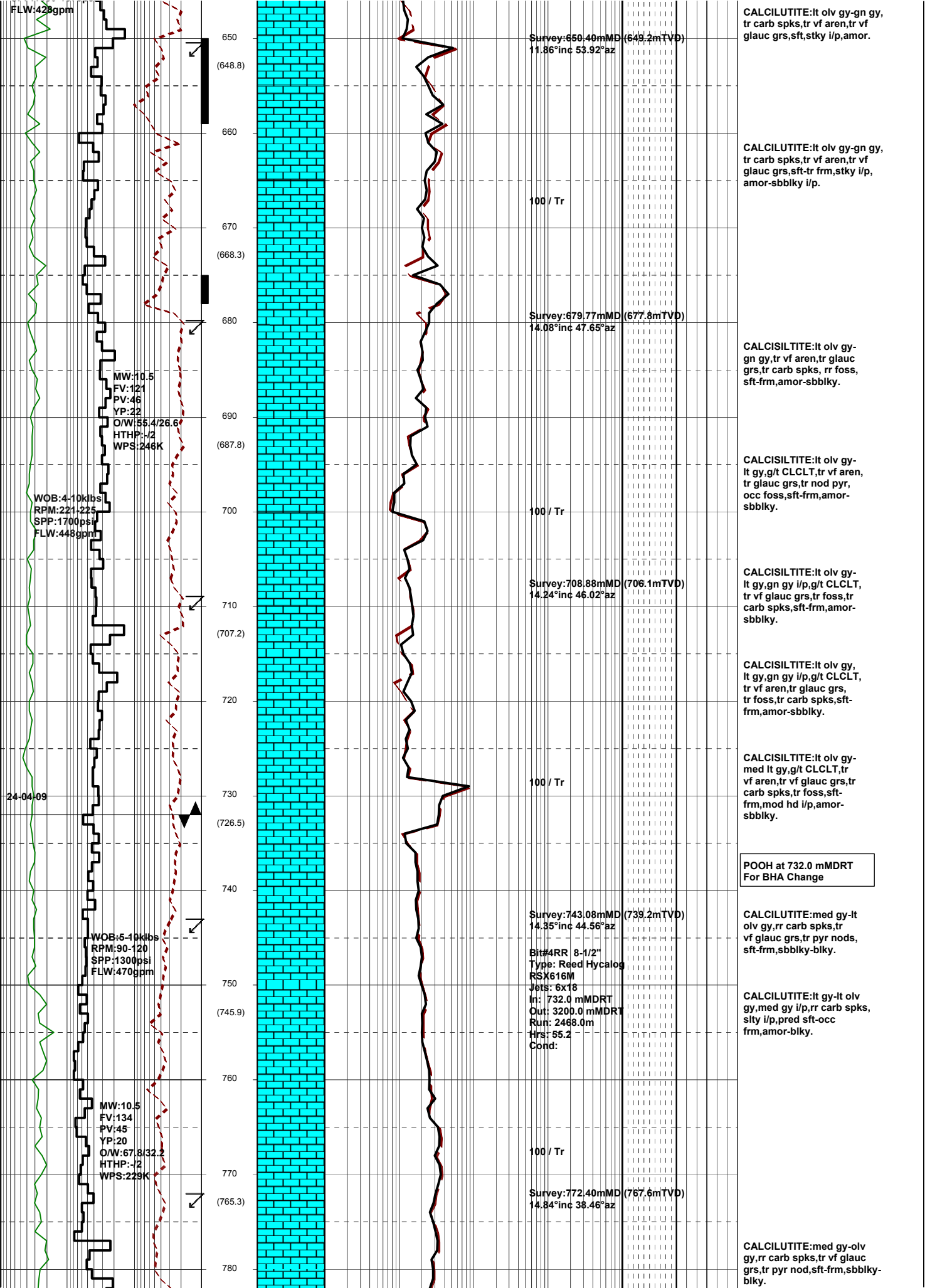
## Cobia A19A



GENERAL	SURFACE POSITION	HOLE / CASING INFO	DATE / DEPTH	ENGINEERS
Country : AUSTRALIA	Longitude : 148°18'32.830" E	8-1/2" Hole to 3200.0 mMDRT	Kick off Date: 20/04/2009	Mark Smith
Permit : VIC / L5	Latitude : 38°26'57.578" S		Total Depth Date: 28/04/2009	Gareth Munro
Field : COBIA	MGA Co-ord X : 614234.63 mE	9-5/8" Casing to 597.0 mMDRT	Total Depth: 3200.00 mMDRT	Colin Chadwick
Basin : GIPPSLAND	MGA Co-ord Y : 5743517.69 mN	10-3/4" Surface Csg at 607.6 mMDRT	True Vertical Depth: 2473.45 mTVDR	Phil Rady
Well Type : DEVELOPMENT	RT to MSL : 41.0 m		Log Scale : 1/ 500	Robert Sulivan
Rig Name : Nabors 175	RT to Sea Bed : 120.0 m			Leigh Dower

ABBREVIATIONS	LITHOLOGY LEGEND	ENGINEERING LEGEND
MW Mud Weight	Claystone	Casing shoe
FV Funnel Viscosity	Siltstone	Casing Top
PV Plastic Viscosity	Fine sandstone	Survey
YP Yield Point	Shale	Sidewall core
O/W Oil/Water Ratio	Conglomerate	Core
WPS Aq. Phase Salinity	Marl	RFT
HPHT Fluid Loss	Limestone	MDT
CI Chlorides	Dolomite	Mud gain
Incl Inclination	Coal-lignite	Mud loss
Az Azimuth	Volcanic cinder, tuff	
	Bryozoa	
	Radiolariae	
	Echinoids	
	Foraminiferae	
	Cement	
	Glauconite	
	Pyrite	





CALCILUTITE:lt olv gy-gn gy, tr carb spks, tr vf aren, tr vf glauc grs, sft, stky i/p, amor.

CALCILUTITE:lt olv gy-gn gy, tr carb spks, tr vf aren, tr vf glauc grs, sft-tr frm, stky i/p, amor-sbbiky i/p.

CALCISILTITE:lt olv gy-gn gy, tr vf aren, tr glauc grs, tr carb spks, rr foss, sft-frm, amor-sbbiky.

CALCISILTITE:lt olv gy-lt gy, g/t CLCLT, tr vf aren, tr glauc grs, tr nod pyr, occ foss, sft-frm, amor-sbbiky.

CALCISILTITE:lt olv gy-lt gy, gn gy i/p, g/t CLCLT, tr vf glauc grs, tr foss, tr carb spks, sft-frm, amor-sbbiky.

CALCISILTITE:lt olv gy, lt gy, gn gy i/p, g/t CLCLT, tr vf aren, tr glauc grs, tr foss, tr carb spks, sft-frm, amor-sbbiky.

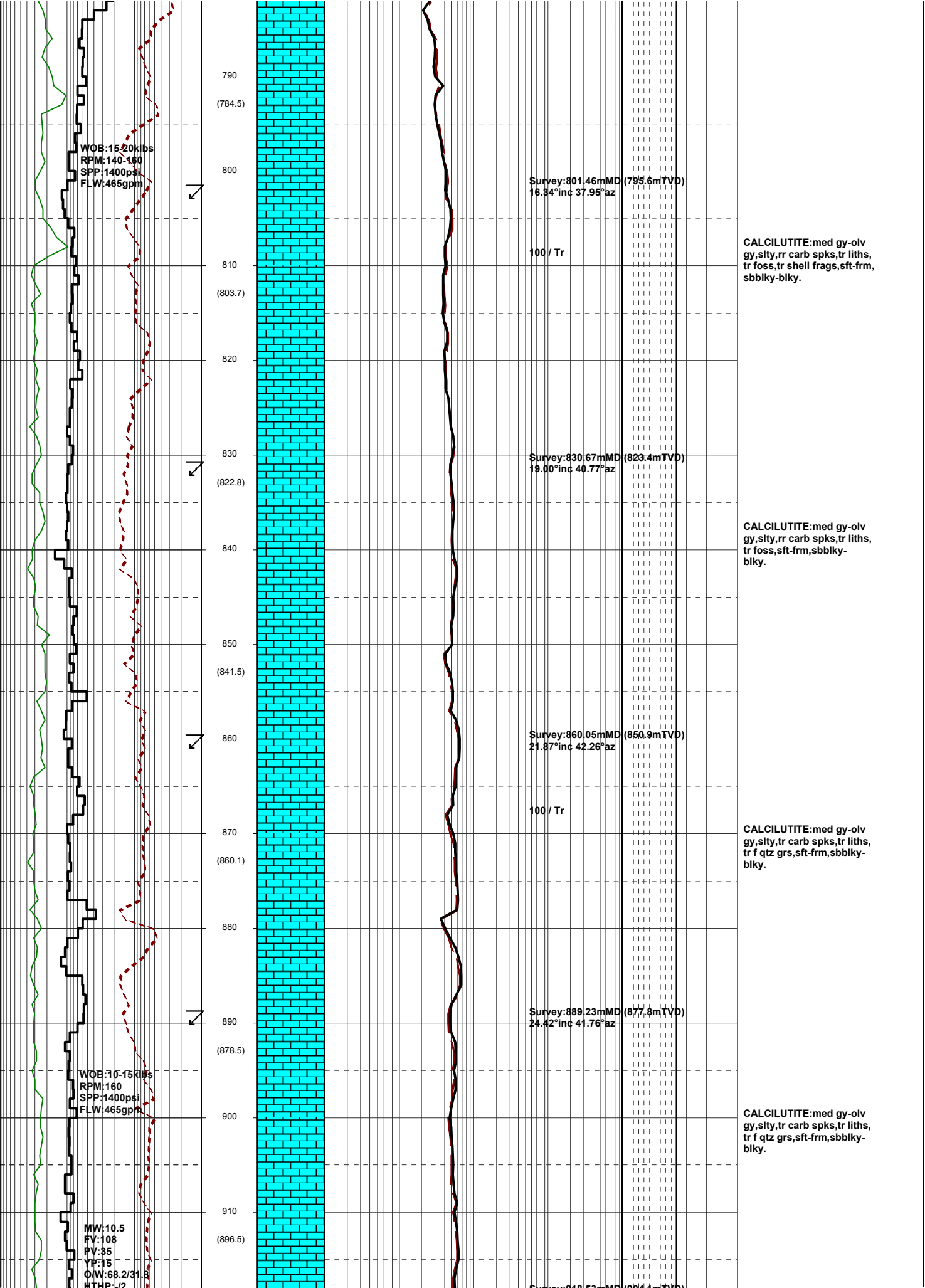
CALCISILTITE:lt olv gy-med lt gy, g/t CLCLT, tr vf aren, tr vf glauc grs, tr carb spks, tr foss, sft-frm, mod hd i/p, amor-sbbiky.

POOH at 732.0 mMDRT For BHA Change

CALCILUTITE:med gy-lt olv gy, rr carb spks, tr vf glauc grs, tr pyr nod, sft-frm, sbbiky-blky.

CALCILUTITE:lt gy-lt olv gy, med gy i/p, rr carb spks, sity i/p, pred sft-occ frm, amor-blky.

CALCILUTITE:med gy-olv gy, rr carb spks, tr vf glauc grs, tr pyr nod, sft-frm, sbbiky-blky.



WOB:15.20klbs  
RPM:140-160  
SPP:1400psi  
FLW:465gpm

WOB:10-15klbs  
RPM:160  
SPP:1400psi  
FLW:465gpm

MW:10.5  
FV:108  
PV:35  
YP:15  
O/W:68.2/31.8  
HTHP:1/2

790  
(784.5)  
800  
810  
(803.7)  
820  
830  
(822.8)  
840  
850  
(841.5)  
860  
870  
(860.1)  
880  
890  
(878.5)  
900  
910  
(896.5)

Survey:801.46mMD (795.6mTVD)  
16.34°inc 37.95°az

Survey:830.67mMD (823.4mTVD)  
19.00°inc 40.77°az

Survey:860.05mMD (850.9mTVD)  
21.87°inc 42.26°az

Survey:889.23mMD (877.8mTVD)  
24.42°inc 41.76°az

Survey:918.52mMD (904.1mTVD)

100 / Tr

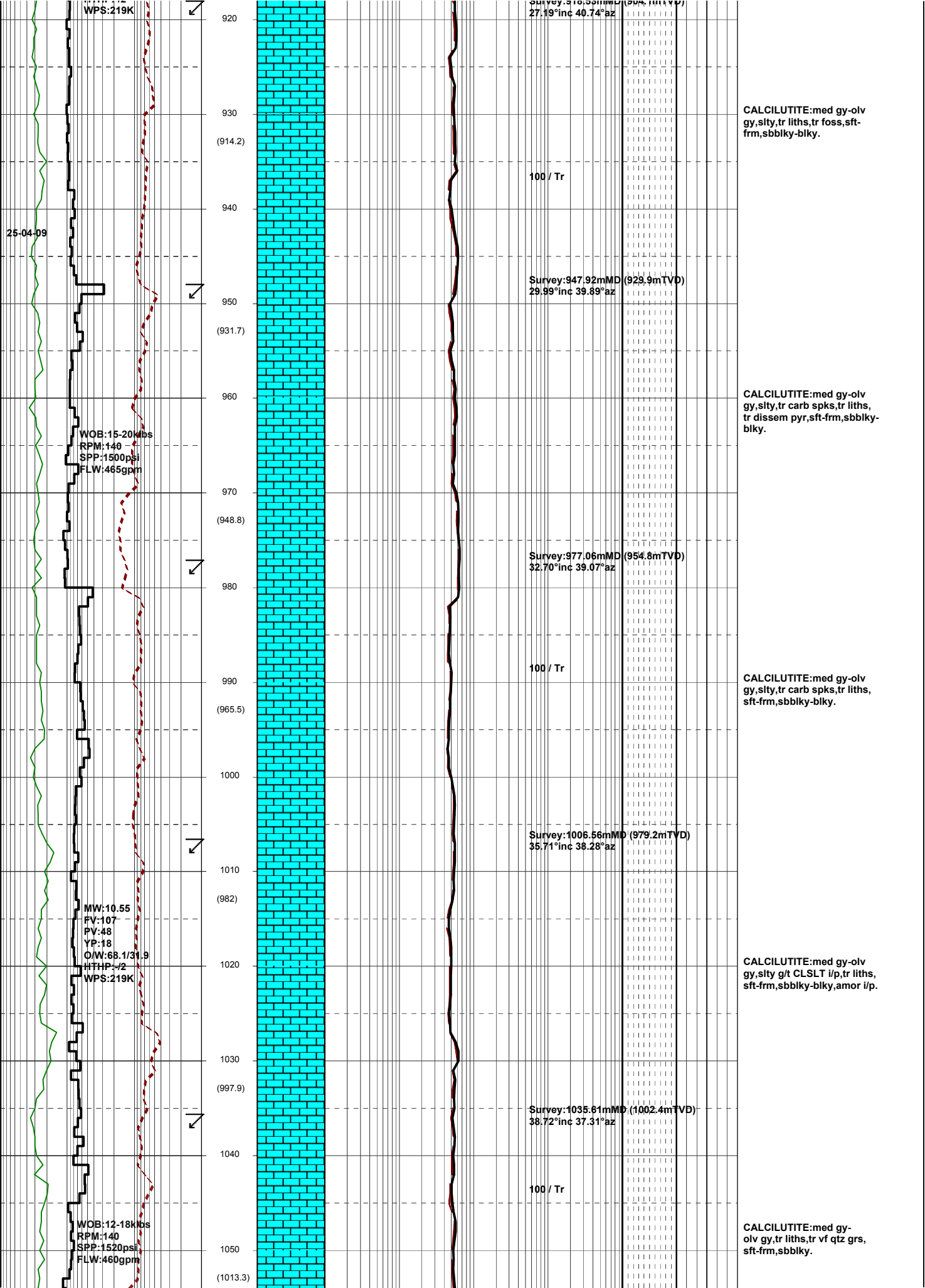
100 / Tr

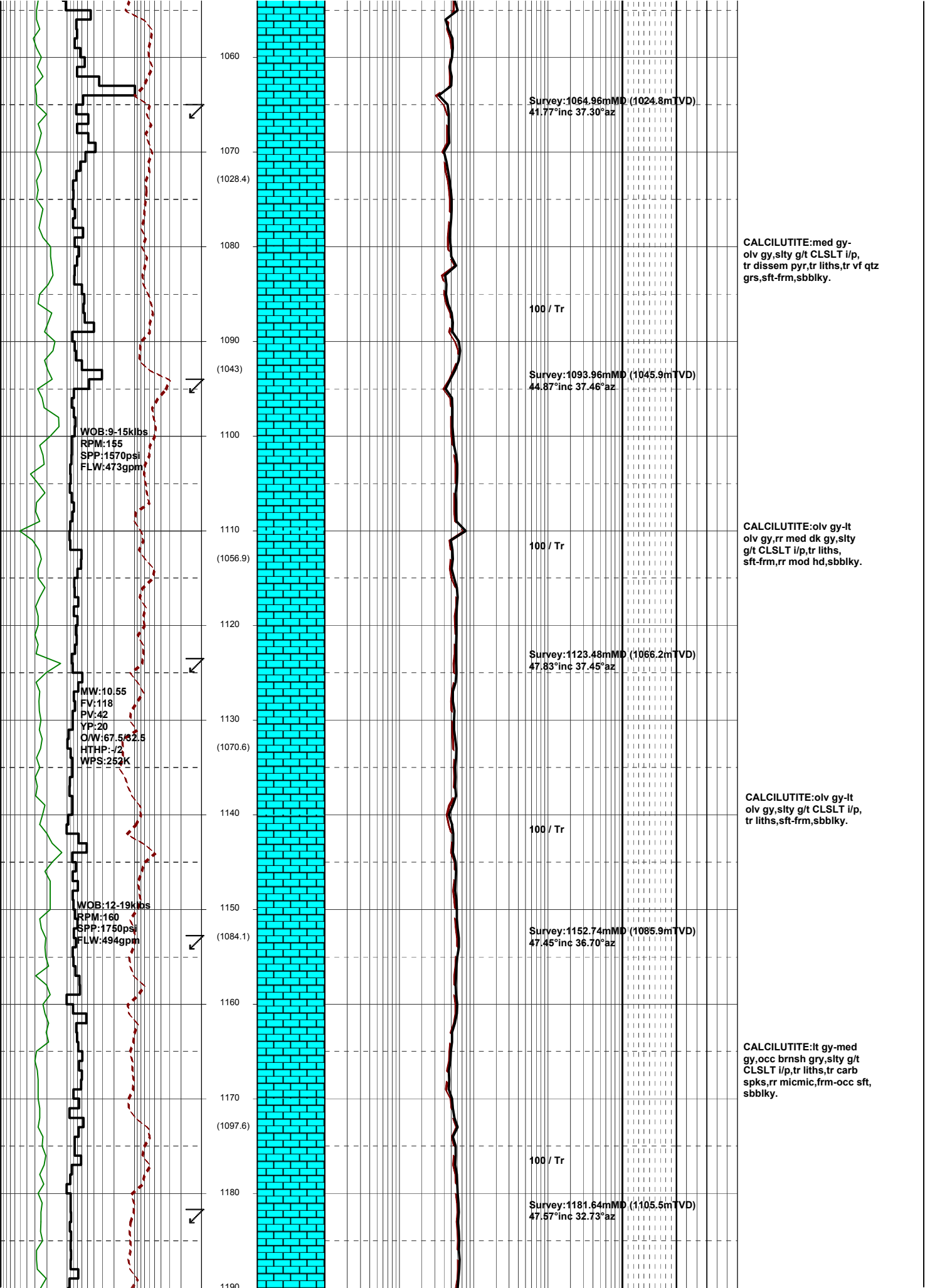
CALCILUTITE:med gy-olv  
gy,slty,rr carb spks,tr liths,  
tr foss,tr shell frags,sft-frn,  
sbbiky-blky.

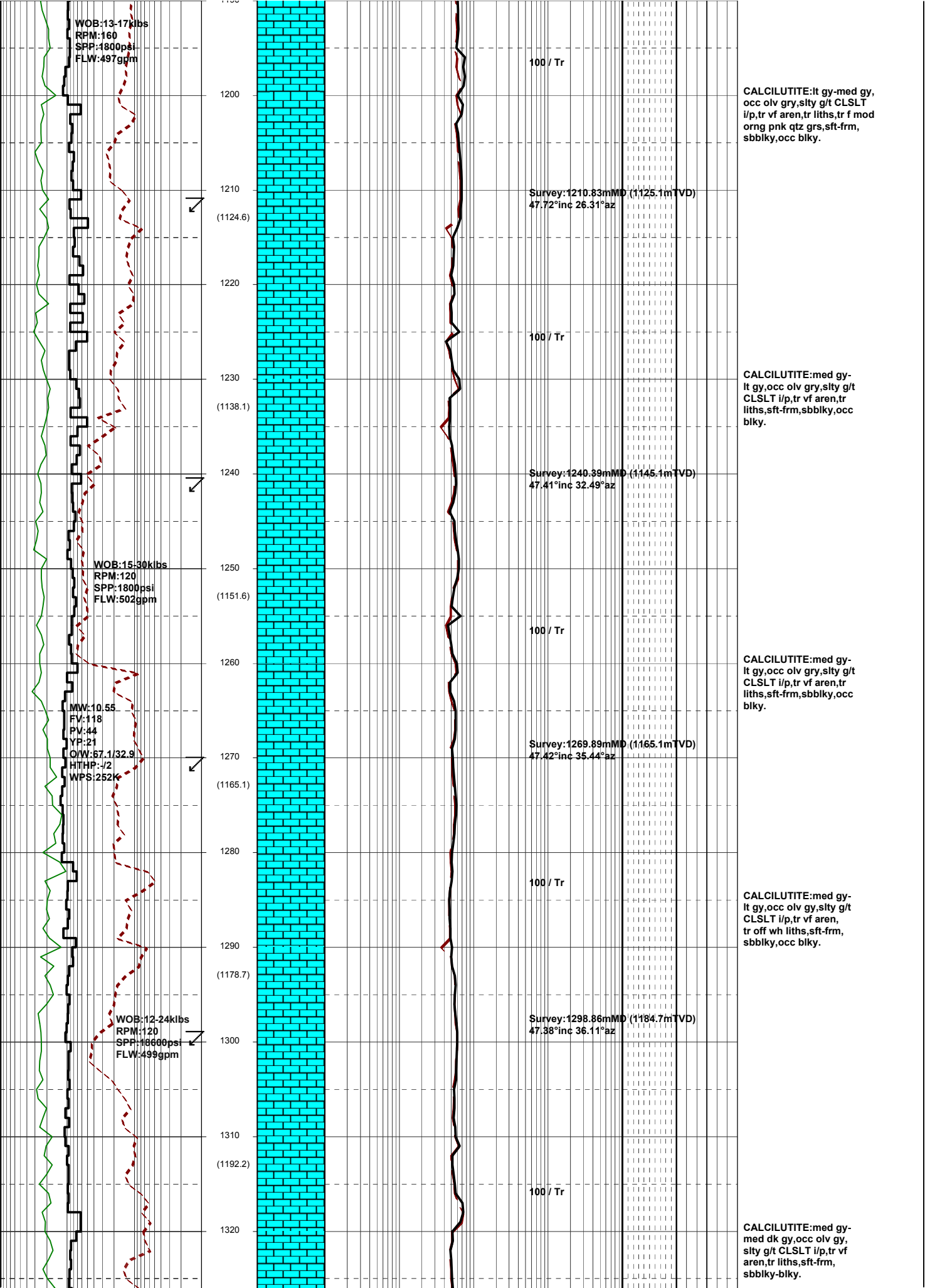
CALCILUTITE:med gy-olv  
gy,slty,rr carb spks,tr liths,  
tr foss,sft-frn,sbbiky-  
blky.

CALCILUTITE:med gy-olv  
gy,slty,tr carb spks,tr liths,  
tr f qtz grs,sft-frn,sbbiky-  
blky.

CALCILUTITE:med gy-olv  
gy,slty,tr carb spks,tr liths,  
tr f qtz grs,sft-frn,sbbiky-  
blky.







WOB:13-17klbs  
RPM:160  
SPP:1800psi  
FLW:497gpm

1200  
1210  
1220  
1230  
1240  
1250  
1260  
1270  
1280  
1290  
1300  
1310  
1320

(1124.6)  
(1138.1)  
(1151.6)  
(1165.1)  
(1178.7)  
(1192.2)

100 / Tr  
100 / Tr  
100 / Tr  
100 / Tr  
100 / Tr  
100 / Tr

Survey:1210.83mMD (1125.1mTVD)  
47.72°inc 26.31°az  
  
Survey:1240.39mMD (1145.1mTVD)  
47.41°inc 32.49°az  
  
Survey:1269.89mMD (1165.1mTVD)  
47.42°inc 35.44°az  
  
Survey:1298.86mMD (1184.7mTVD)  
47.38°inc 36.11°az

WOB:15-30klbs  
RPM:120  
SPP:1800psi  
FLW:502gpm

MW:10.55  
FV:118  
PV:44  
YF:21  
Q/W:67.1/32.9  
HTHP:-J2  
WPS:252

WOB:12-24klbs  
RPM:120  
SPP:18600psi  
FLW:499gpm

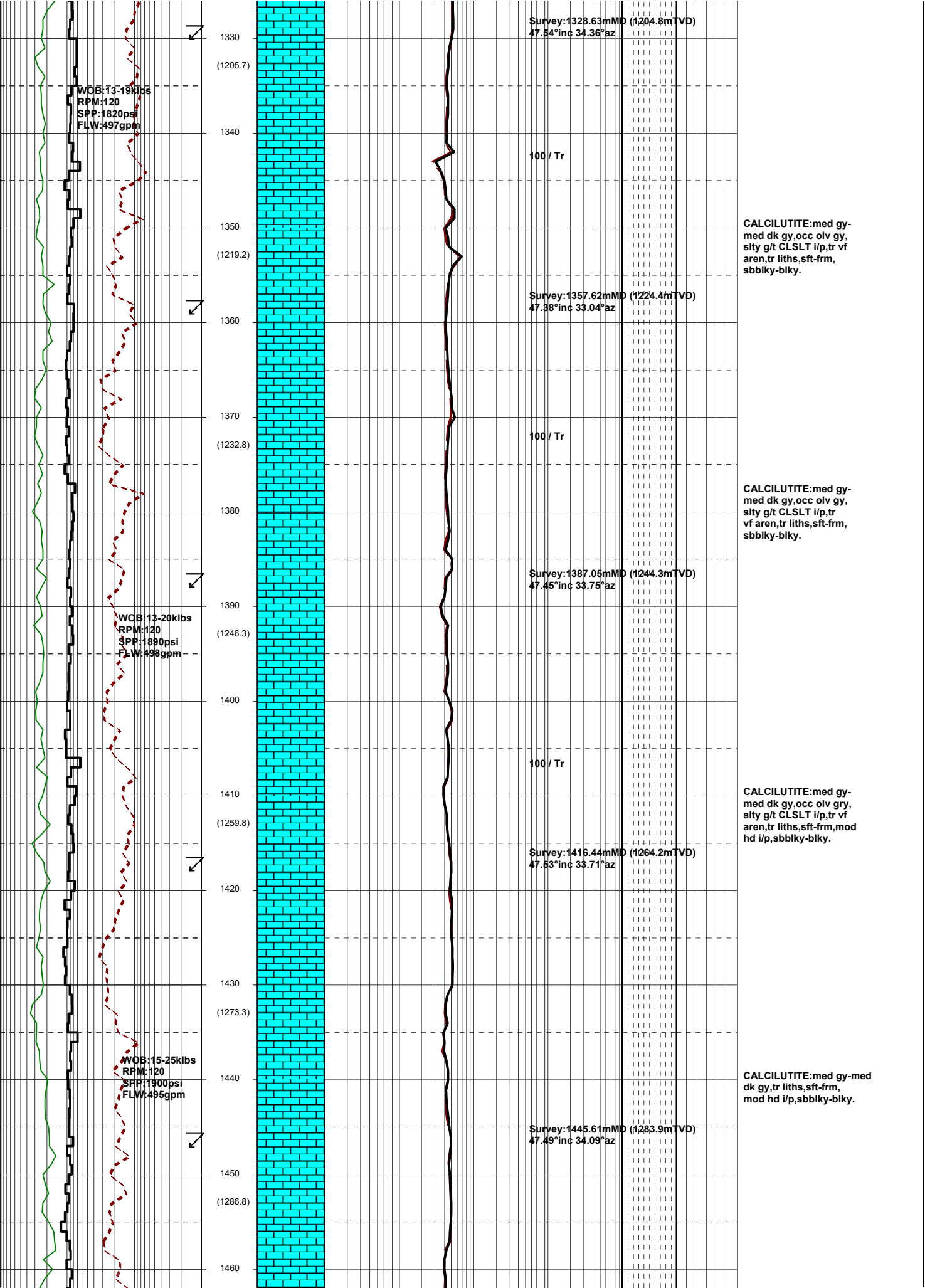
CALCILUTITE:lt gy-med gy,  
occ olv gry,silty g/t CLSLT  
i/p,tr vf aren,tr liths,tr f mod  
ornng pnk qtz grs,sft-frm,  
sbbiky,occ blkly.

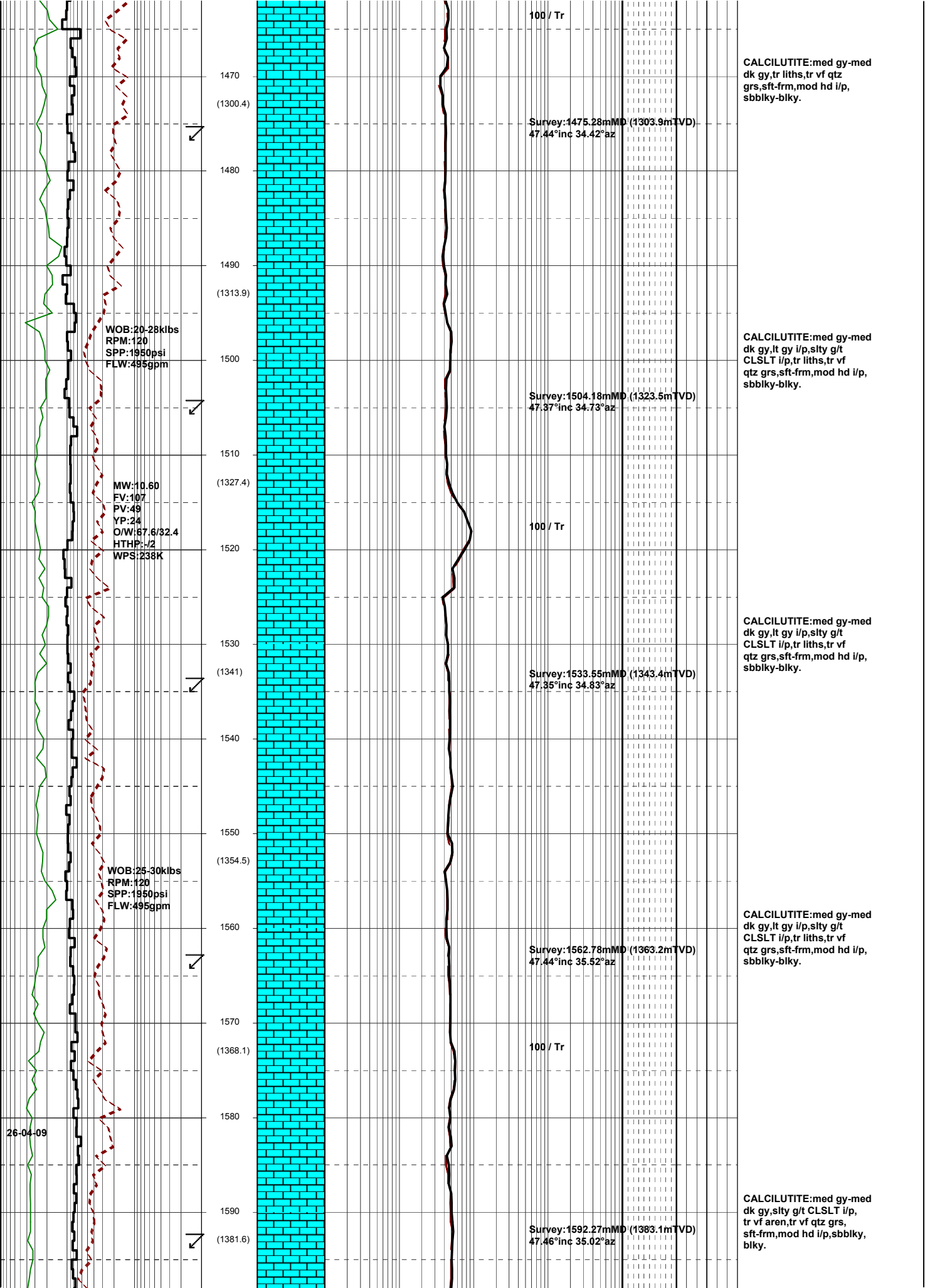
CALCILUTITE:med gy-  
lt gy,occ olv gry,silty g/t  
CLSLT i/p,tr vf aren,tr  
liths,sft-frm,sbbiky,occ  
blkly.

CALCILUTITE:med gy-  
lt gy,occ olv gry,silty g/t  
CLSLT i/p,tr vf aren,tr  
liths,sft-frm,sbbiky,occ  
blkly.

CALCILUTITE:med gy-  
lt gy,occ olv gy,silty g/t  
CLSLT i/p,tr vf aren,  
tr off wh liths,sft-frm,  
sbbiky,occ blkly.

CALCILUTITE:med gy-  
med dk gy,occ olv gy,  
silty g/t CLSLT i/p,tr vf  
aren,tr liths,sft-frm,  
sbbiky-blky.





1470  
(1300.4)  
1480  
1490  
(1313.9)  
1500  
1510  
(1327.4)  
1520  
1530  
(1341)  
1540  
1550  
(1354.5)  
1560  
1570  
(1368.1)  
1580  
1590  
(1381.6)

WOB: 20-28klbs  
RPM: 120  
SPP: 1950psi  
FLW: 495gpm

MW: 10.60  
FV: 107  
PV: 49  
YP: 24  
OW: 67.6/32.4  
HTHP: -2  
WPS: 238K

WOB: 25-30klbs  
RPM: 120  
SPP: 1950psi  
FLW: 495gpm

100 / Tr

Survey: 1475.28mMD (1303.9mTVD)  
47.44°inc 34.42°az

Survey: 1504.18mMD (1323.5mTVD)  
47.37°inc 34.73°az

100 / Tr

Survey: 1533.55mMD (1343.4mTVD)  
47.35°inc 34.83°az

Survey: 1562.78mMD (1363.2mTVD)  
47.44°inc 35.52°az

100 / Tr

Survey: 1592.27mMD (1383.1mTVD)  
47.46°inc 35.02°az

CALCILUTITE: med gy, med dk gy, tr liths, tr vf qtz grs, sft frm, mod hd i/p, sbbiky-biky.

CALCILUTITE: med gy, med dk gy, lt gy i/p, slty g/t CLSLT i/p, tr liths, tr vf qtz grs, sft frm, mod hd i/p, sbbiky-biky.

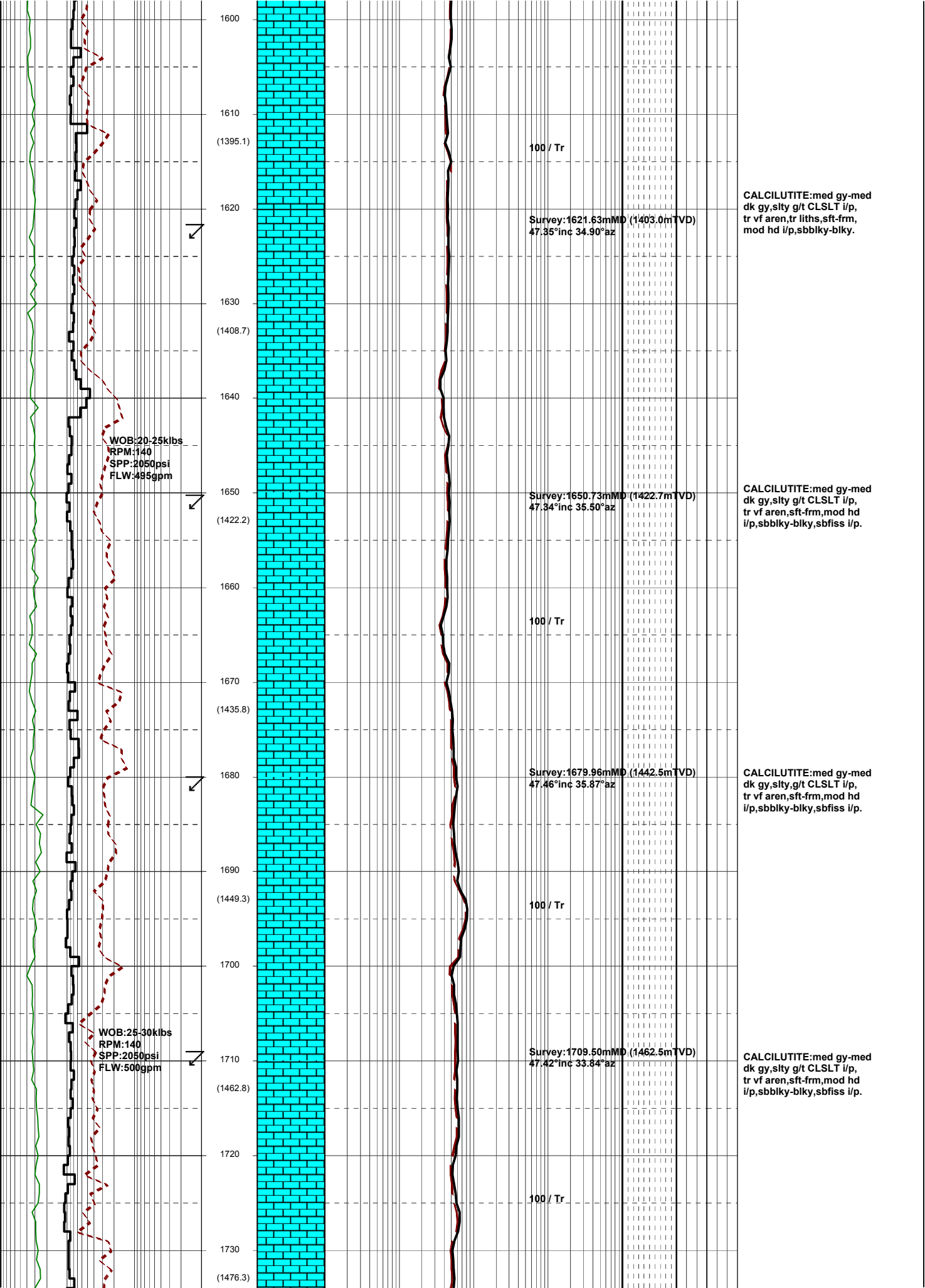
CALCILUTITE: med gy, med dk gy, lt gy i/p, slty g/t CLSLT i/p, tr liths, tr vf qtz grs, sft frm, mod hd i/p, sbbiky-biky.

CALCILUTITE: med gy, med dk gy, lt gy i/p, slty g/t CLSLT i/p, tr liths, tr vf qtz grs, sft frm, mod hd i/p, sbbiky-biky.

CALCILUTITE: med gy, med dk gy, slty g/t CLSLT i/p, tr vf aren, tr vf qtz grs, sft frm, mod hd i/p, sbbiky, bkly.

26-04-09



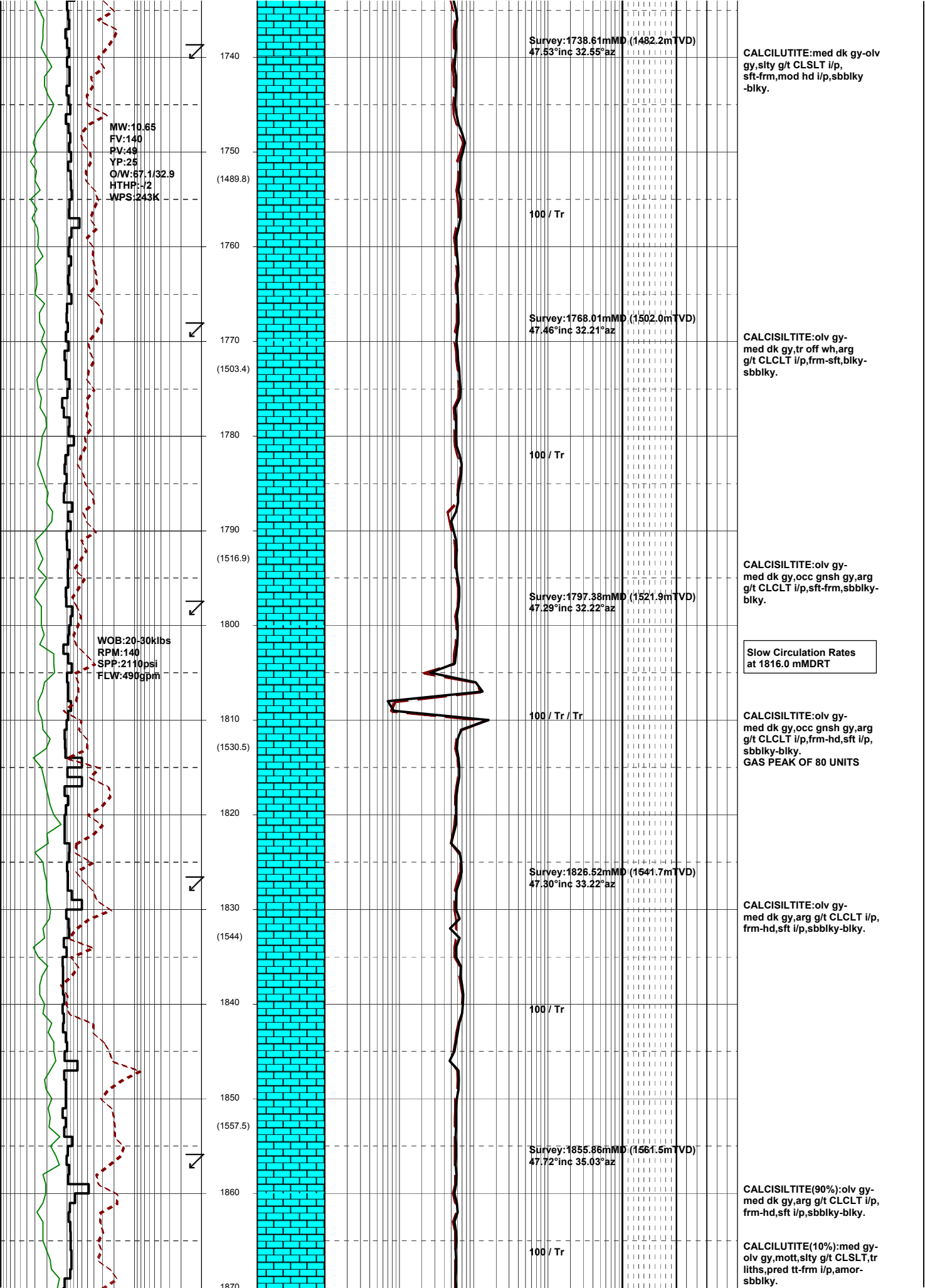


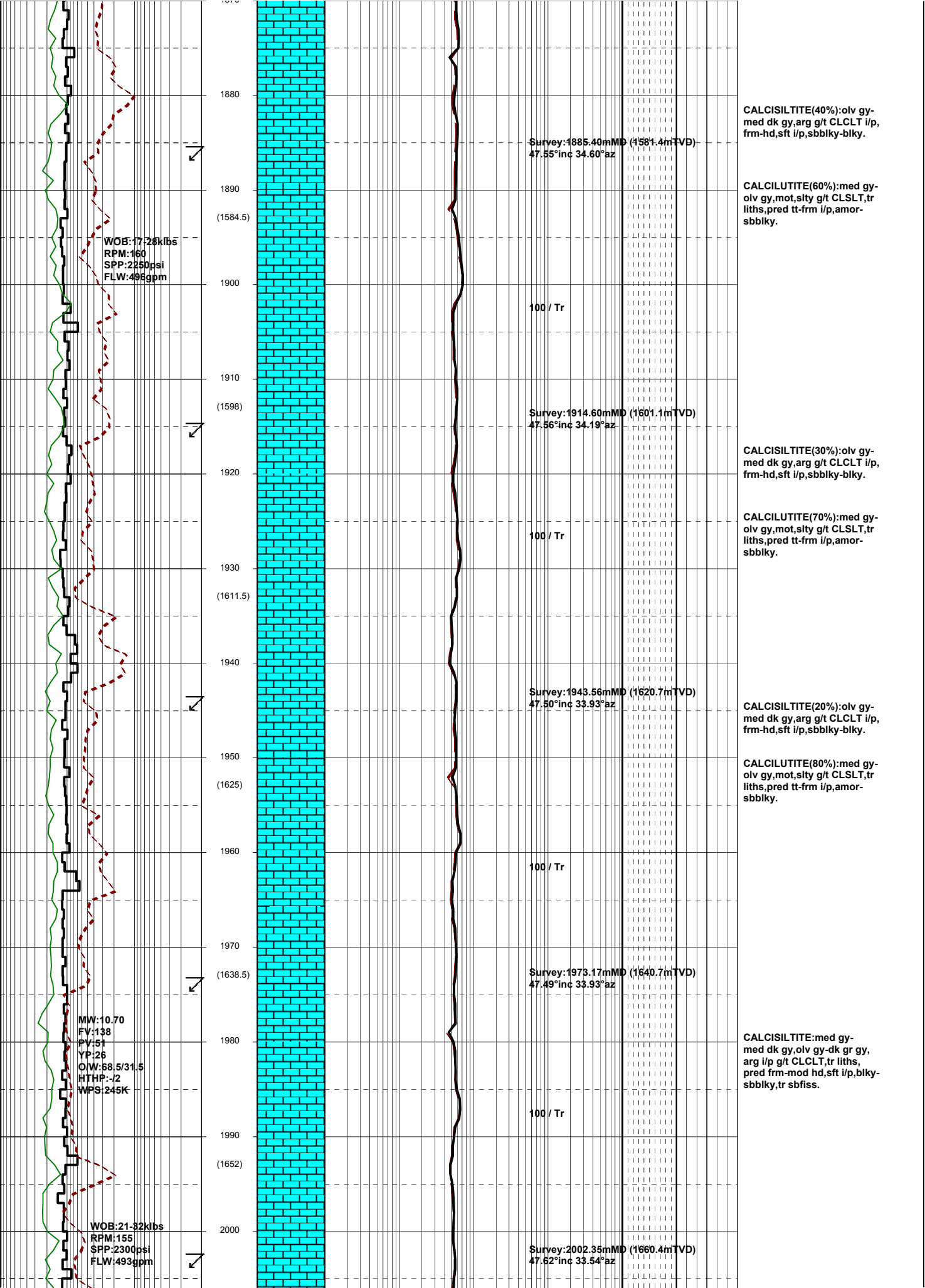
CALCILUTITE: med gy-med dk gy, slty g/t CLSLT i/p, tr vf aren, tr liths, sft frm, mod hd i/p, sbblky-blky.

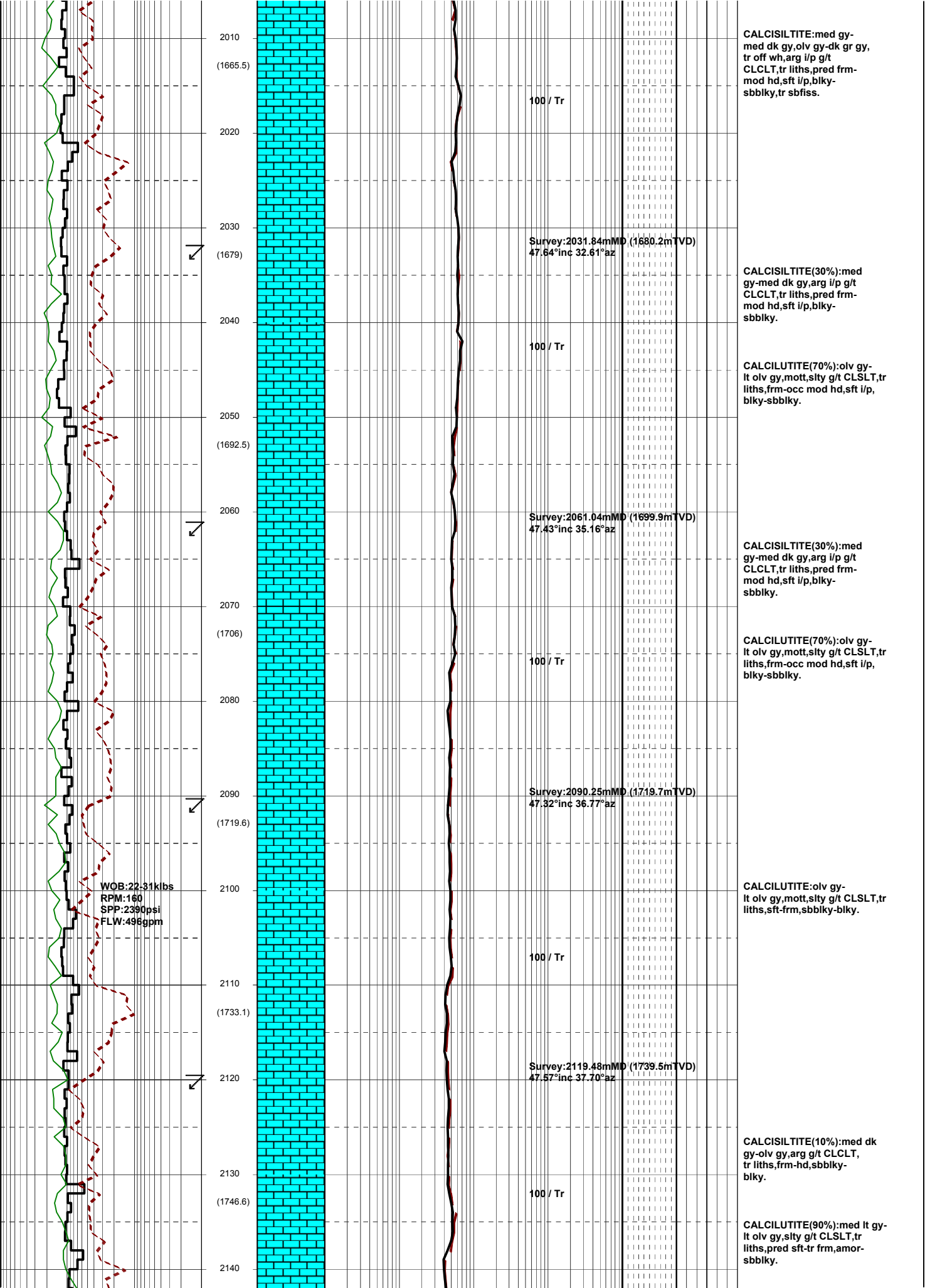
CALCILUTITE: med gy-med dk gy, slty g/t CLSLT i/p, tr vf aren, sft frm, mod hd i/p, sbblky-blky, sbfiss i/p.

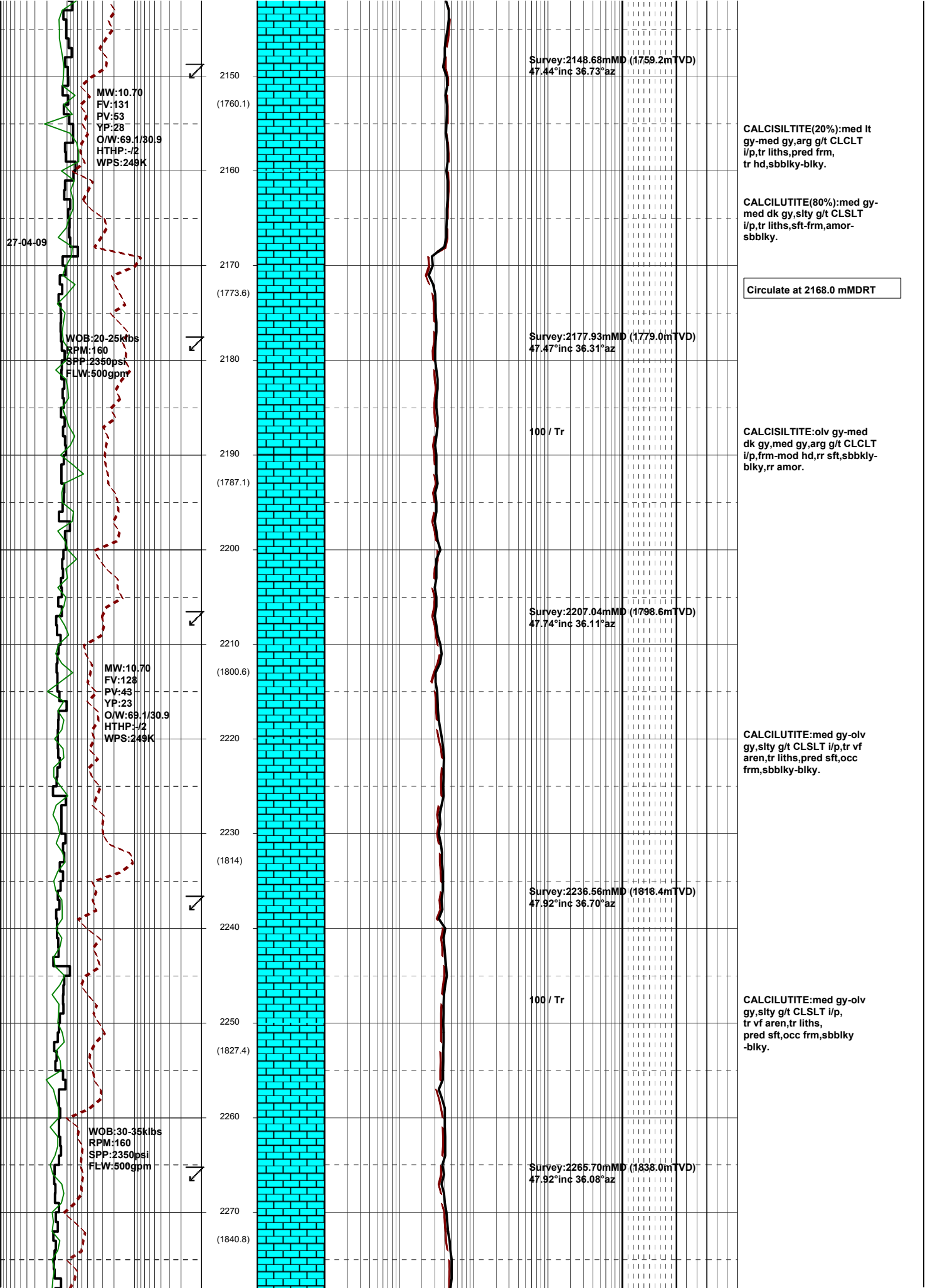
CALCILUTITE: med gy-med dk gy, slty g/t CLSLT i/p, tr vf aren, sft frm, mod hd i/p, sbblky-blky, sbfiss i/p.

CALCILUTITE: med gy-med dk gy, slty g/t CLSLT i/p, tr vf aren, sft frm, mod hd i/p, sbblky-blky, sbfiss i/p.









MW:10.70  
 FV:131  
 PV:53  
 YP:28  
 O/W:69.1/30.9  
 HTHP:-1/2  
 WPS:249K

27-04-09

WOB:20-25klbs  
 RPM:160  
 SPP:2350psi  
 FLW:500gpm

MW:10.70  
 FV:128  
 PV:43  
 YP:23  
 O/W:69.1/30.9  
 HTHP:-1/2  
 WPS:249K

WOB:30-35klbs  
 RPM:160  
 SPP:2350psi  
 FLW:500gpm

Survey:2148.68mMD (1759.2mTVD)  
 47.44°inc 36.73°az

CALCISILTITE(20%):med lt gy-med gy,arg g/t CLCLT i/p,tr liths,pred frm, tr hd,sbbkly-blky.

CALCILUTITE(80%):med gy-med dk gy,sity g/t CLSLT i/p,tr liths,sft-frm,amor-sbbkly.

Circulate at 2168.0 mMDRT

Survey:2177.93mMD (1779.0mTVD)  
 47.47°inc 36.31°az

100 / Tr

CALCISILTITE:olv gy-med dk gy,med gy,arg g/t CLCLT i/p,frm-mod hd,rr sft,sbbkly-blky,rr amor.

Survey:2207.04mMD (1798.6mTVD)  
 47.74°inc 36.11°az

CALCILUTITE:med gy-olv gy,sity g/t CLSLT i/p,tr vf aren,tr liths,pred sft,occ frm,sbbkly-blky.

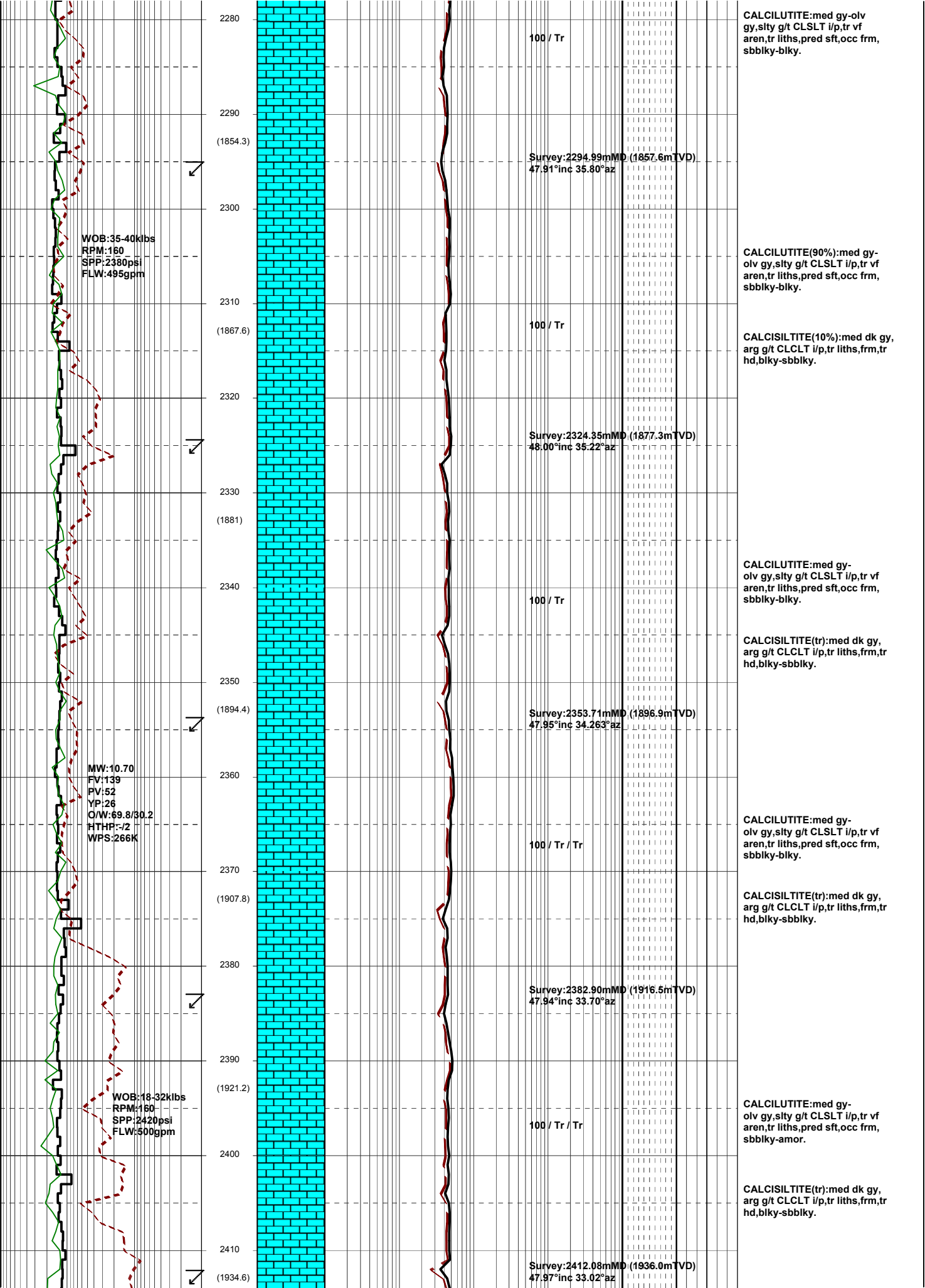
Survey:2236.56mMD (1818.4mTVD)  
 47.92°inc 36.70°az

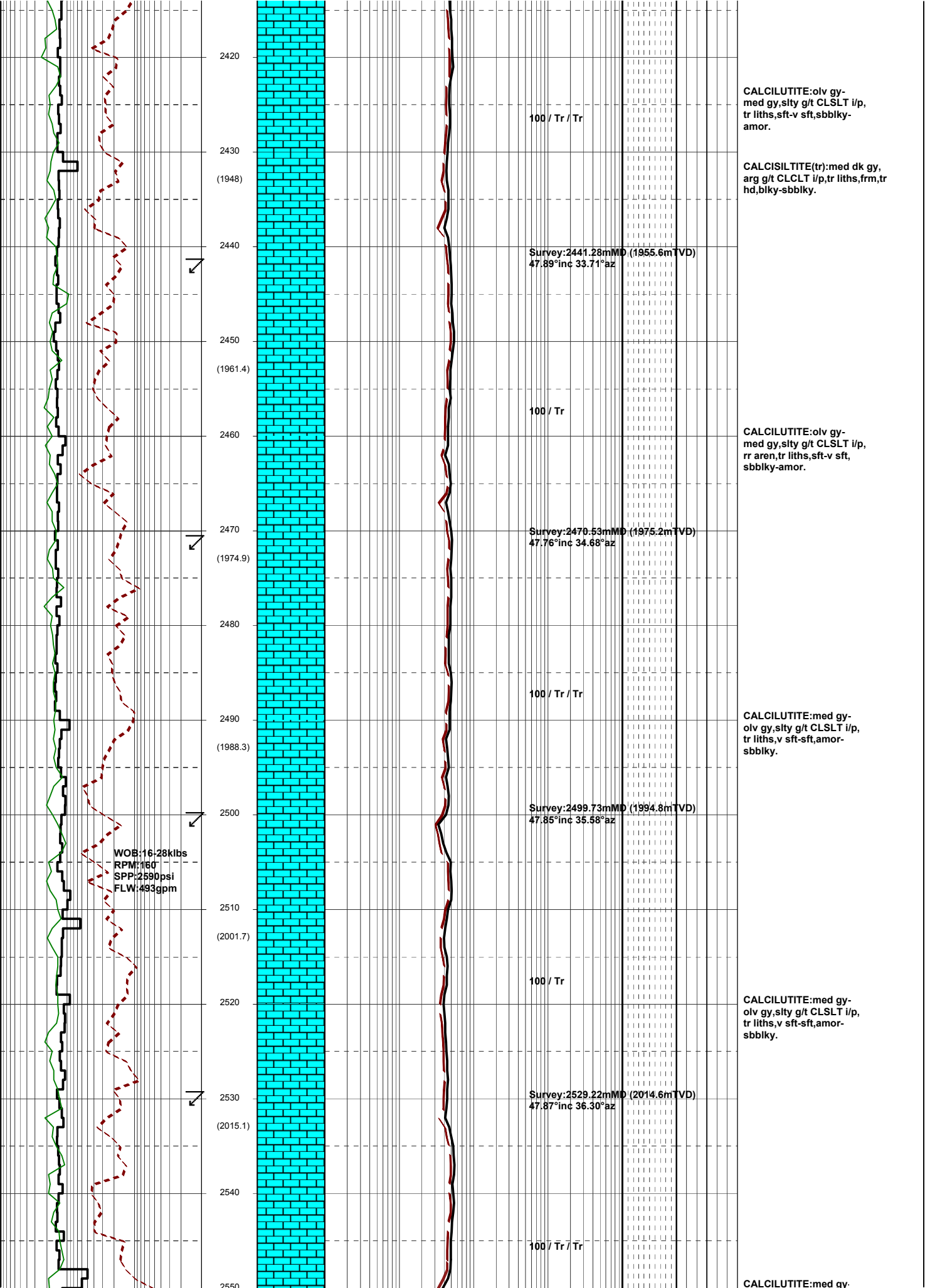
100 / Tr

CALCILUTITE:med gy-olv gy,sity g/t CLSLT i/p, tr vf aren,tr liths, pred sft,occ frm,sbbkly-blky.

Survey:2265.70mMD (1838.0mTVD)  
 47.92°inc 36.08°az

2150  
(1760.1)  
2160  
2170  
(1773.6)  
2180  
2190  
(1787.1)  
2200  
2210  
(1800.6)  
2220  
2230  
(1814)  
2240  
2250  
(1827.4)  
2260  
2270  
(1840.8)





2420  
2430  
(1948)  
2440  
2450  
(1961.4)  
2460  
2470  
(1974.9)  
2480  
2490  
(1988.3)  
2500  
2510  
(2001.7)  
2520  
2530  
(2015.1)  
2540  
2550

WOB:16.28klbs  
RPM:150  
SPP:2590psi  
FLW:493gpm

100 / Tr / Tr  
100 / Tr  
100 / Tr / Tr  
100 / Tr / Tr  
100 / Tr  
100 / Tr / Tr

Survey:2441.28mMD (1955.6mTVD)  
47.89°inc 33.71°az

Survey:2470.53mMD (1975.2mTVD)  
47.76°inc 34.68°az

Survey:2499.73mMD (1994.8mTVD)  
47.85°inc 35.58°az

Survey:2529.22mMD (2014.6mTVD)  
47.87°inc 36.30°az

CALCILUTITE:olv gy-med gy,sity g/t CLSLT i/p, tr liths,sft-v sft,sbbkly- amor.

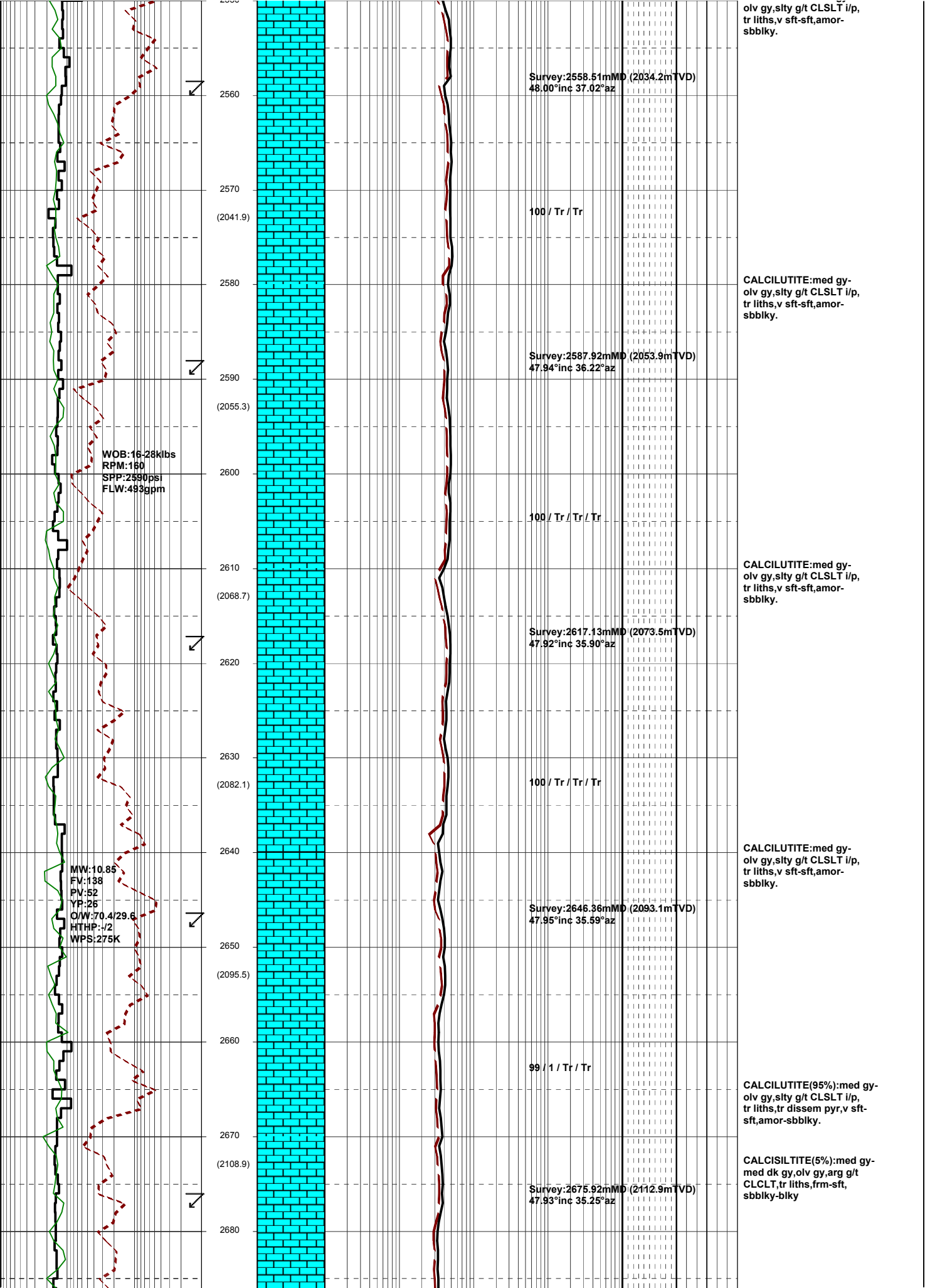
CALCISILTITE(tr):med dk gy, arg g/t CLCLT i/p,tr liths,frm,tr hd,bkly-sbbkly.

CALCILUTITE:olv gy-med gy,sity g/t CLSLT i/p, rr aren,tr liths,sft-v sft, sbbkly-amor.

CALCILUTITE:med gy-olv gy,sity g/t CLSLT i/p, tr liths,v sft-sft,amor-sbbkly.

CALCILUTITE:med gy-olv gy,sity g/t CLSLT i/p, tr liths,v sft-sft,amor-sbbkly.

CALCILUTITE:med gy-





2690  
(2122.3)  
2700  
2710  
(2135.8)  
2720  
2730  
(2149.2)  
2740  
2750  
(2162.7)  
2760  
2770  
(2176.1)  
2780  
2790  
(2189.5)  
2800  
2810  
(2203.1)  
2820

WOB:12-25klbs  
RPM:160  
SPP:2600psi  
FLW:493gpm

WOB:20-30klbs  
RPM:160  
SPP:2700psi  
FLW:485gpm

99 / 1 / Tr / Tr

Survey:2705.30mMD (2132.6mTVD)  
47.80°inc 35.56°az

99 / 1 / Tr / Tr

Survey:2734.50mMD (2152.3mTVD)  
47.51°inc 40.75°az

99 / 1 / Tr / Tr

Survey:2763.81mMD (2172.0mTVD)  
48.02°inc 44.23°az

99 / 1 / Tr / Tr

Survey:2793.20mMD (2191.7mTVD)  
47.86°inc 45.28°az

99 / 1 / Tr / Tr

CALCILUTITE(95%):med gy-olv gy,sity g/t CLSLT i/p, tr liths,v sft-sft,amor-sbbkly.

CALCILUTITE(5%):med gy-med dk gy,olv gy,arg g/t CLCLT,tr liths,frm-sft,sbbkly-bkly

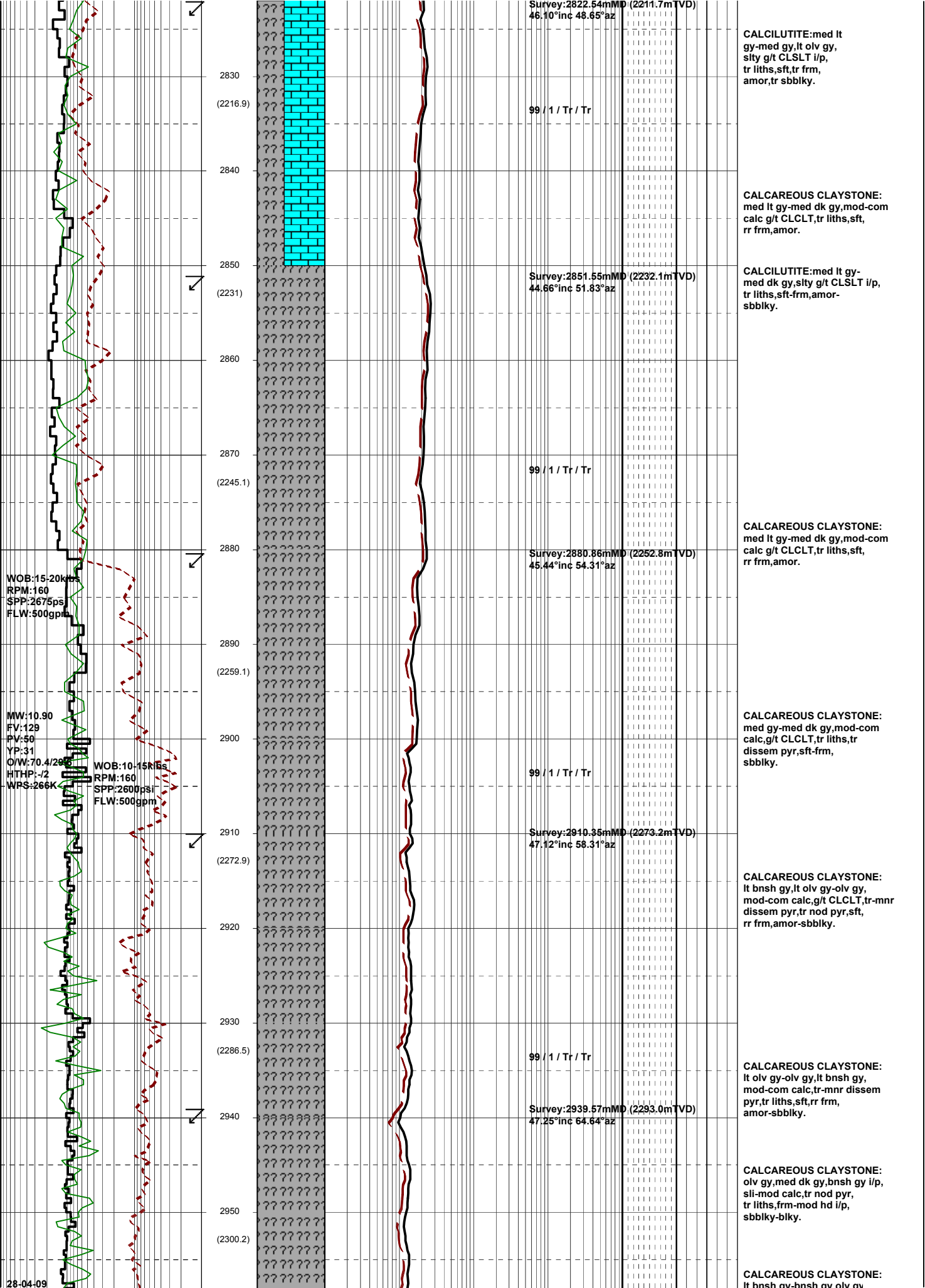
CALCILUTITE(95%):med gy-olv gy,sity g/t CLSLT i/p, tr liths,v sft-sft,amor-sbbkly.

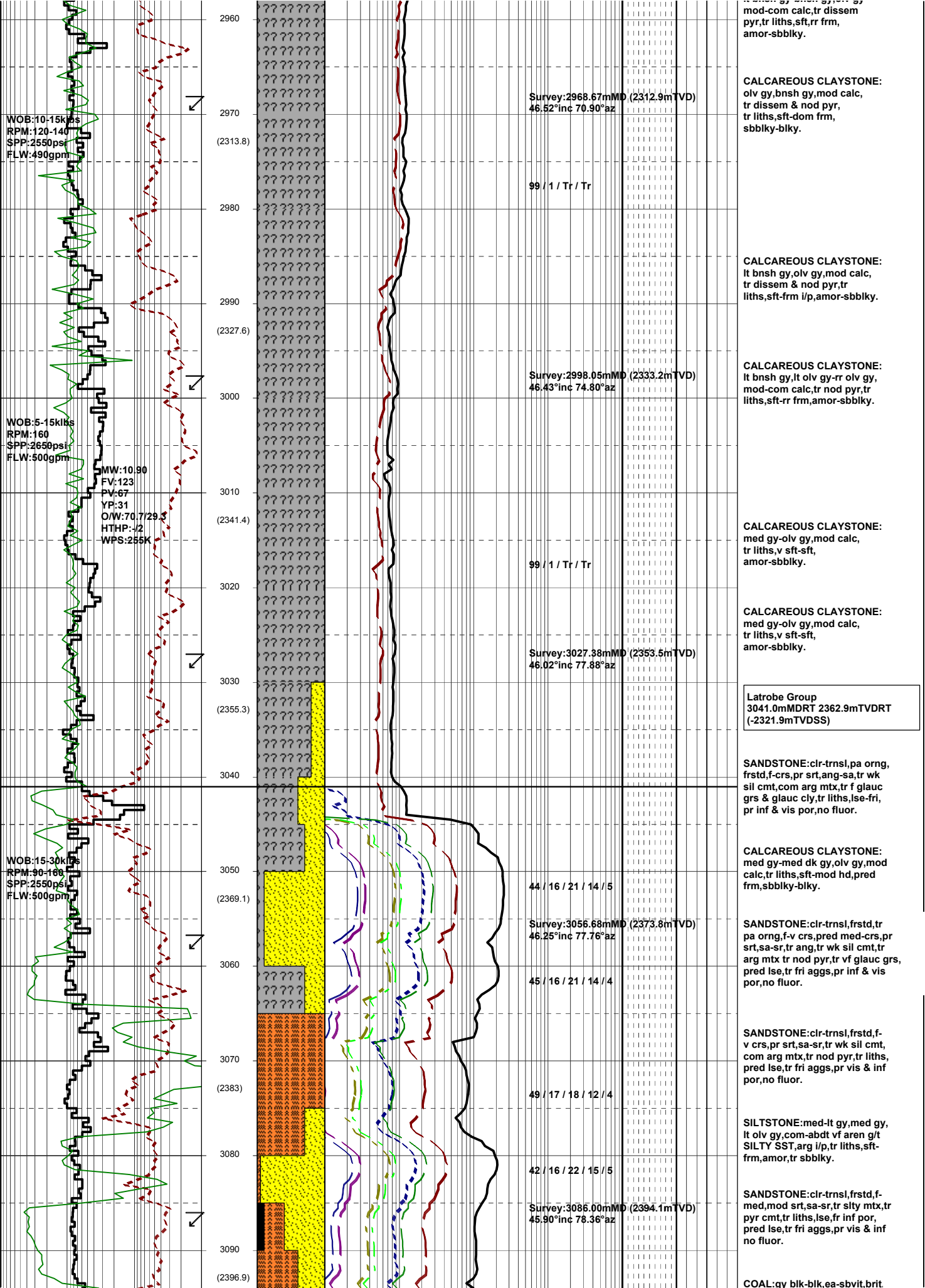
CALCILUTITE(5%):med gy-med dk gy,olv gy,arg g/t CLCLT,tr liths,frm-sft,sbbkly-bkly

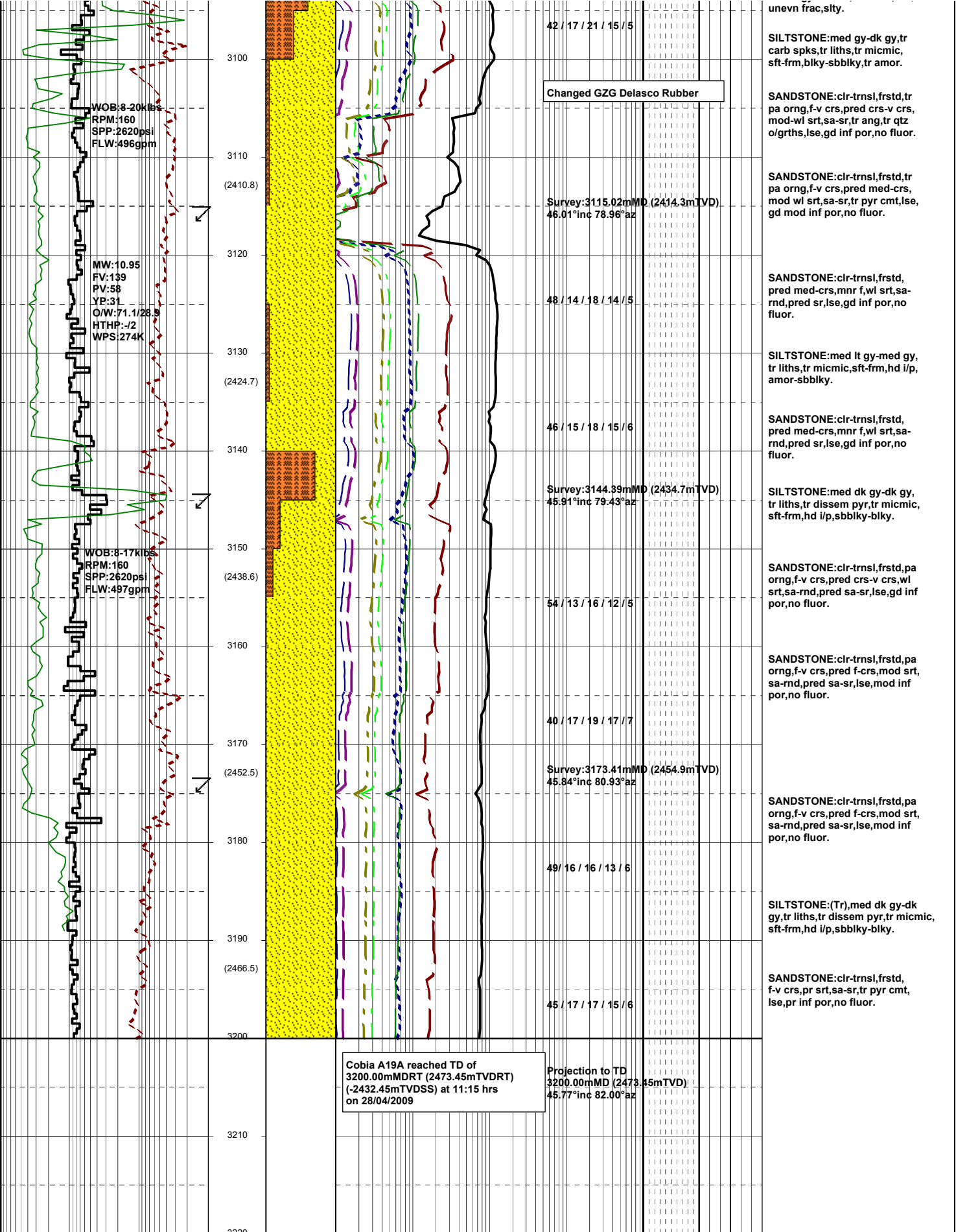
CALCILUTITE:med lt gy-med dk gy,lt olv gy,sity g/t CLSLT i/p,tr liths,sft,tr frm,amor-sbbkly.

CALCILUTITE:med lt gy-med gy,lt olv gy,sity g/t CLSLT i/p, tr liths,sft,tr frm,amor,tr sbbkly.

Lakes Entrance Fm:  
2821.0mMDRT 2210.6mTVDRT  
(-2169.6mTVDSS)







WOB: 8-20kbs  
 RPM: 160  
 SPP: 2620psi  
 FLW: 496gpm

MW: 10.95  
 FV: 139  
 PV: 58  
 YP: 31  
 Q/W: 71.1/28.9  
 HTHP: -J2  
 WPS: 274K

WOB: 8-17kbs  
 RPM: 160  
 SPP: 2620psi  
 FLW: 497gpm

Changed GZG Delasco Rubber

Cobia A19A reached TD of  
 3200.00mMDRT (2473.45mTVD)  
 (-2432.45mTVDSS) at 11:15 hrs  
 on 28/04/2009

Projection to TD  
 3200.00mMD (2473.45mTVD)  
 45.77°inc 82.00°az

42 / 17 / 21 / 15 / 5

Survey: 3115.02mMD (2414.3mTVD)  
 46.01°inc 78.96°az

48 / 14 / 18 / 14 / 5

46 / 15 / 18 / 15 / 6

Survey: 3144.39mMD (2434.7mTVD)  
 45.91°inc 79.43°az

54 / 13 / 16 / 12 / 5

40 / 17 / 19 / 17 / 7

Survey: 3173.41mMD (2454.9mTVD)  
 45.84°inc 80.93°az

49 / 16 / 16 / 13 / 6

45 / 17 / 17 / 15 / 6

uneven frac, stty.

SILTSTONE: med gy-dk gy, tr carb spks, tr liths, tr micmic, sft-frm, blkly-sbbkly, tr amor.

SANDSTONE: cl-r-trnsl, frstd, tr pa org, f-v crs, pred med-crs, mod-wl srt, sa-sr, tr ang, tr qtz o/grths, lse, gd inf por, no fluor.

SANDSTONE: cl-r-trnsl, frstd, tr pa org, f-v crs, pred med-crs, mod-wl srt, sa-sr, tr pyr cmt, lse, gd mod inf por, no fluor.

SANDSTONE: cl-r-trnsl, frstd, pred med-crs, mnr f, wl srt, sa-rnd, pred sr, lse, gd inf por, no fluor.

SILTSTONE: med lt gy-med gy, tr liths, tr micmic, sft-frm, hd i/p, amor-sbbkly.

SANDSTONE: cl-r-trnsl, frstd, pred med-crs, mnr f, wl srt, sa-rnd, pred sr, lse, gd inf por, no fluor.

SILTSTONE: med dk gy-dk gy, tr liths, tr disse pyr, tr micmic, sft-frm, hd i/p, sbbkly-blky.

SANDSTONE: cl-r-trnsl, frstd, pa org, f-v crs, pred crs-v crs, wl srt, sa-rnd, pred sa-sr, lse, gd inf por, no fluor.

SANDSTONE: cl-r-trnsl, frstd, pa org, f-v crs, pred f-crs, mod srt, sa-rnd, pred sa-sr, lse, mod inf por, no fluor.

SANDSTONE: cl-r-trnsl, frstd, pa org, f-v crs, pred f-crs, mod srt, sa-rnd, pred sa-sr, lse, mod inf por, no fluor.

SILTSTONE: (Tr), med dk gy-dk gy, tr liths, tr disse pyr, tr micmic, sft-frm, hd i/p, sbbkly-blky.

SANDSTONE: cl-r-trnsl, frstd, f-v crs, pr srt, sa-sr, tr pyr cmt, lse, pr inf por, no fluor.